



**ACRYLITE® EndLighten  
acrylic sheet**

*Ultra Slim*

*For Round the Clock Attention*

# ACRYLITE® EndLighten acrylic sheet

Luminous pictures exert a magical fascination. The stained glass windows of historical churches — the light boxes of the Middle Ages, so to speak — offer impressive proof of this fact. Unfortunately, they were only effective during the day because they depended on daylight. Modern signage systems have their own light source. Advertising messages printed on translucent film are backlit, and thus retain their eye-catching effect around the clock. More and more designers of illuminated advertising signs therefore use light boxes as a form of presentation.

Light boxes have to comply with high demands to provide the best possible promotional effect. These include:

- uniform illumination
- no visible contours of light sources
- slimness
- high luminous intensity
- neutral color

## Extra Slim Light Boxes

Back-lit displays often include a very deep cabinet because the lamps have to be installed at a large distance behind the illuminated motif.

ACRYLITE® EndLighten acrylic sheet is a unique, highly transparent, edge-lit acrylic sheet. This enables the construction of extremely slim, compact luminous panels with high light output. The neutral-colored diffuser particles embedded in the material ensure uniform light distribution without influencing the color.

## Thin Is In

ACRYLITE EndLighten sheet, with its innovative design and unique performance capabilities, eliminates the need to recess signage into building walls, saving considerable construction costs and installation time.

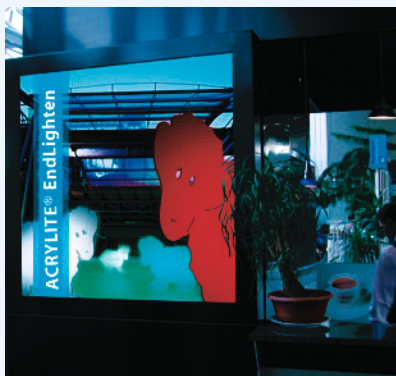
According to the Americans with Disabilities Act (ADA) Standards for Accessible Design 28 CFR Part 36, section 4.4.1,

*“ Objects projecting from walls...with their leading edges between 27” and 80” (685mm and 2030mm) above the finished floor shall protrude no more than 4” (100mm) into walks, halls, corridors, passageways, or aisles.”*

## Fabricating the Easy Way

These sheets are just as simple to handle as conventional transparent ACRYLITE® acrylic sheet. The protective film applied at our factory is only removed before installation and therefore provides maximum protection against mechanical damage during fabrication.

ACRYLITE EndLighten sheet is ready for installation after being cut to size. Edge polishing further improves the effect.



# vided Attention

## The Right Size for Every Application

### Specialist for All Sizes

In order to obtain maximum luminous effectiveness combined with excellent illumination, ACRYLITE EndLighten sheet is provided in three grades.

### ACRYLITE EndLighten L Sheet

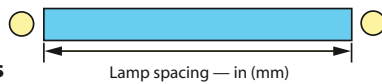
ACRYLITE EndLighten L sheet was developed for illumination on both sides with lamps spaced at 12" – 24" (300 – 600 mm) and illumination on one side at a lamp spacing of 6" – 12" (150 – 300 mm). This material is specially adapted for illumination of posters sized DIN A1 to DIN A4.

### ACRYLITE EndLighten XL Sheet

ACRYLITE EndLighten XL sheet was developed for illumination on both sides with lamps spaced at 24" – 51" (600 – 1,300 mm). ACRYLITE EndLighten XL sheet is therefore ideally suited for illuminating larger posters and illumination on one side at a lamp spacing of 12" – 25" (300 – 650 mm).

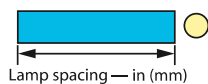
### ACRYLITE EndLighten CM Sheet

Optimized luminous panels tailored to customer needs (Custom-Made), for any size and any number of lamps. With ACRYLITE EndLighten CM sheet, your creativity is limited only by your imagination.



#### Illumination on both sides

Lamp spacing — in (mm)	Recommended grade	Recommended thickness — in (mm)
12 – 24 (300 – 600)	L	.236, .315 (6, 8)
24 – 51 (600 – 1,300)	XL	.315, .394, .472 (8, 10, 12)
custom-made	CM	depending on radiant surface



#### Illumination on one side

Lamp spacing — in (mm)	Recommended grade	Recommended thickness — in (mm)
6 – 12 (150 – 300)	L	.236, .315 (6, 8)
12 – 25 (300 – 650)	XL	.315, .394, .472 (8, 10, 12)
custom-made	CM	depending on radiant surface



# ACRYLITE EndLighten acrylic sheet

## Tips for the Construction of Light Boxes

ACRYLITE EndLighten sheet uniformly distributes the light entering through its edges and redirects it over the entire surface with the highest possible optical output ratio. The brightness of a luminous display therefore depends largely on the power and number of light sources employed, as well as on the size of the edge surface (thickness of the chosen ACRYLITE EndLighten sheet).

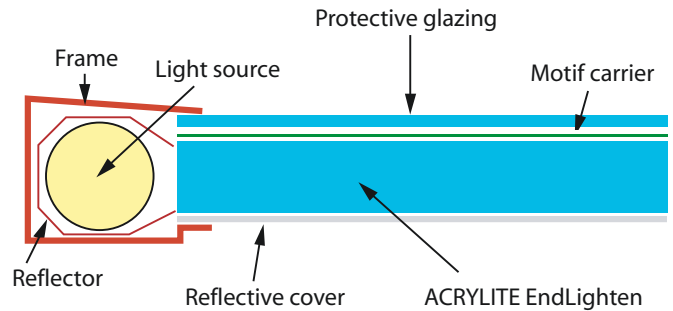
The distance between the light source and the edge of the ACRYLITE EndLighten sheet must be as small as possible so that plenty of light directly enters the sheet. An ideal distance is 0.04" – 0.118" (1 – 3 mm).

The light source can be provided with a reflector to ensure that a maximum amount of light enters the edges (see drawing).

Edges that are not lit should be covered with reflective material such as adhesive tape.

The luminous displays can be installed with one or two radiant surfaces. If only one side is light-emitting, a highly reflective cover should be provided on the back.

The lit edges should have smooth surfaces. Edge polishing improves light entry via the edge. The motif



carrier should be made of light-diffusing material so as to distribute the light exiting the ACRYLITE EndLighten sheet uniformly towards the observer. Printable film is suitable as a motif carrier, but paper can also be used.

Practically all types of glazing are suitable for protecting the motifs, particularly tough, impact-resistant ACRYLITE® AR Abrasion Resistant acrylic sheet.

ACRYLITE EndLighten sheet is available in the standard size of 120" x 80" (3,050 x 2,030 mm) and thickness of .236" (6 mm), .315" (8 mm), .394" (10 mm), and .472" (12 mm).



### Important Notice

The information and statements herein are believed to be reliable but are not to be construed as a warranty or representation for which we assume legal responsibility. Users should undertake sufficient verification and testing to determine the suitability for their own particular purpose of any information or products referred to herein. NO WARRANTY OF FITNESS FOR A PARTICULAR PURPOSE IS MADE. Nothing herein is to be taken as permission, inducement or recommendation to practice any patented invention without a license.

ACRYLITE is a registered trademark of CYRO Industries, Parsippany, NJ, USA.  
© 2005 CYRO Industries. All rights reserved.



CYRO Industries  
379 Interpace Parkway  
Parsippany, NJ 07054  
800-631-5384  
www.cyro.com