

MARINE
D I V I S I O N

Total Plastics, Inc.™ stocks a broad selection of water and weather resistant materials that are well suited to marine applications. Total Plastics is a master distributor of King StarBoard® products (See pages 99 through 101). This polymer sheet material is the standard for use in weather resistant marine applications and is used extensively to replace teak, select hard woods and treated plywood. TPI provides flexible and rigid tubing, sealing, mounting and transfer tapes, as well as polishes, cleaners, adhesives and sealants. In addition, Total Plastics Marine Division offers value-added fabrication and machining services to your specifications and on-time delivery. Call our Marine Division for pricing and availability.

ACRYLIC MIRROR

Acrylic marine grade mirror thermoplastic sheets are rigid, strong, weatherable and lightweight, offering excellent optical quality with half the weight of glass and many times the impact resistance. Acrylic mirror sheet offers the high clarity of glass mirror and the ease of handling and fabricating expected of extruded sheet. Our acrylic mirrored products can easily be cut, routed, drilled and cemented. Marine grade mirror is available in reduced glare, scratch resistant, adhesive back and with custom masking front and back.

Colors: Dark Blue, Light Blue, Light Red, Medium Red, Pink, Purple, Dark Green, Light Green, Yellow, Orange, Peach, Teal, Gray, Standard Gray, Bronze and Gold.

**PEARL FINISH ACRYLIC MIRROR**

Pearl Finish acrylic mirror is available in a wide spectrum of colors. The frosted glass finish reduces visible surface scratching and smudging while providing inherent flexibility and impact resistance. Acrylic mirror will withstand most fabrication methods, including saw and laser cutting, cold forming to shapes, hot line bending for sharp edges and gluing.

Colors: Dark Blue, Light Blue, Light Red, Medium Red, Pink, Purple, Dark Green, Light Green, Yellow, Orange, Peach, Teal, Bronze, Gold, Clear and Transparent.

Call TPI (1-866-856-6825) for more information on marine grade mirror.

EX-CELL™: ENHANCED CELL CAST ACRYLIC

Spartech Polycast EX-Cell™ Modified Cell-Cast Acrylic sheet is more flexible and forgiving than standard acrylic sheet. It has been designed for reduced chipping during routing and fabrication and maintains the ability to relieve stress points during drilling, tapping and cutting. This enhanced pliability means a more fabrication friendly acrylic sheet, reduced cracking and extended in-service durability.

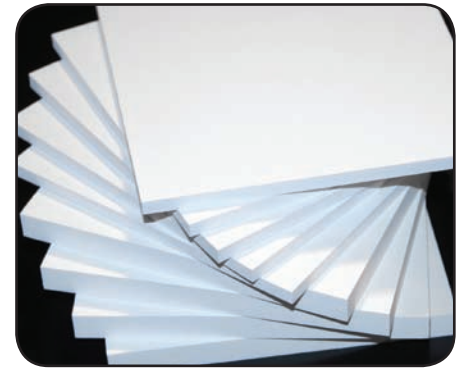
EX-Cell™ is ideal for both the marine and furniture & fixture industries. The material's formability, machinability, ductility, and ease of processing make it a logical material choice for boat hatches and doors, hinged lids, point-of-purchase displays, and many other applications.

Call TPI (1-866-856-6825) for sizes and availability on EX-Cell™ Modified Cell-Cast Acrylic sheet.

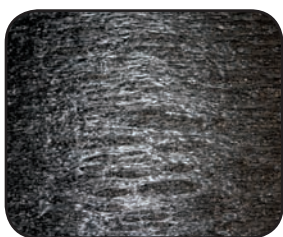
CELTEC® MARINE PVC EXPANDED FOAM BOARD

Celtec® Marine is made from rigid expanded foam polyvinyl chloride (PVC) material whose extraordinary combination of features makes it ideal for wood trim and plywood replacement in boat manufacturing. Its closed cell structure does not absorb water and acts as a water barrier. Because of its staple pull and screw pull strength, Celtec® Marine is ideal for applications in marine upholstery, seat backs, seat bottoms, trim for rough fiberglass openings, brackets, cabinets, draws etc.

Colors: White, Black and Grey.



Color	Thickness	Width	Length	Weight/Sheet (lbs)
White	10mm	48"	96"	37
	10mm	48"	120"	47
	12mm	48"	96"	44
	12mm	48"	120"	55
	15mm	48"	96"	55
	15mm	48"	120"	69
	19mm	48"	96"	69
	19mm	48"	120"	86
	25mm	48"	96"	91
	25mm	48"	120"	118
Black	10mm	48"	96"	37
	12mm	48"	96"	44
	12mm	48"	120"	55
	19mm	48"	96"	69
	19mm	48"	120"	86
	25mm	48"	96"	91
	25mm	48"	120"	118
Grey (PMS 8C, Darker than Cool Grey)	10mm	48"	96"	37
	12mm	48"	96"	44



SPARALLOY ULTRABOARD™: STRUCTURAL MARINE BOARD

SparAlloy Ultra-Board™ is made from a unique blend of polymers to meet the specific needs of the boating and marine industry. This recycled foam board is an excellent replacement for wood and metal components in areas that require good strength to weight ratios, no water absorption, and ease of fabrication. The material also possesses superior rigidity, good screw retention, and is bondable using a wide variety of adhesives. As such, it can be used on everything from cleat blocks to bulkheads. As a material, SparAlloy UltraBoard is replacing pressure treated plywood because it eliminates rot and water intrusion, has much better physical characteristics, and does not release any dangerous toxins during the manufacturing or use of the product. It is also replacing aluminum and other non-ferrous metals because of its reduced weight, lower cost, and ease of fabrication.

Colors: Black.

Standard Sheet Sizes: 48"x96" Cut-to-Size.

Standard Gauges: 1/4", 3/8", 1/2", 3/4"

**KING
STARBOARD®****KING STARBOARD® ORIGINAL MARINE BUILDING SHEET**

King StarBoard® is the original marine-grade polymer and the industry standard. It is the product of a proprietary process called K-Stran™, the most advanced manufacturing process available for producing consistently flat continuous sheets. King StarBoard® is environmentally stabilized to withstand the harshest marine conditions. It will not rot or discolor like teak and other solid woods, and it will not delaminate like wood laminates. King StarBoard® is easy to work with using standard woodworking tools, and design changes are a snap. In addition, the installed cost of King StarBoard® is less than teak, other common marine woods, and fiberglass. Plus, our large sheet sizes maximize your yield. Boat buyers appreciate King StarBoard®'s low-maintenance finish. Repair and refinishing due to weathering and decay are eliminated, and cleaning is easy. King StarBoard® has a handsome matte finish on both sides to hide scuffs and scratches that would show on glossy textured sheets or acrylics.

Colors: White/White, Light Gray, Dolphin Gray, Sansshade, Arctic White, Seafoam, Sea Pearl and Black.

Standard Sheet Sizes: 54" x 96", 48" x 96"

Standard Gauges: 1/4", 3/8", 1/2", 3/4", 1", 1-1/2"

**KING
STARBOARD****KING
STARBOARD® XL****KING STARBOARD® XL LIGHTWEIGHT MARINE BUILDING SHEET**

King StarBoard® XL is a lighter, more economical version of the popular King StarBoard®. This 100% virgin polymer, marine-grade cellular material has an excellent surface finish that looks good enough to use in high-visibility applications where structural strength and a finished edge are not important. King StarBoard® XL sheets are up to 25% lighter in weight than King StarBoard®, and are made with the same textured surface and colors for a perfect match. As with King StarBoard®, King StarBoard® XL is made with the exclusive K-Stran™ process for superior consistency and flatness, and has a thickness tolerance of plus or minus 5% (unlike ordinary polymer sheets that use 10% as an acceptable tolerance).



Colors: White/White, Light Gray, Dolphin Gray, Sansshade, Arctic White, Seafoam, Sea Pearl and Black.

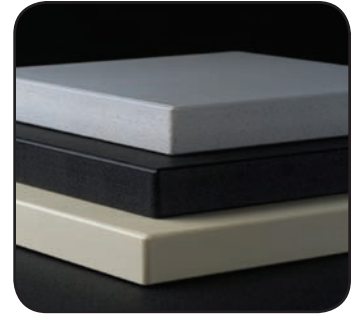
Standard Sheet Sizes: 60" x 96", 48" x 96"

Standard Gauges: 1/4", 3/8", 1/2", 3/4"

KING STARLITE^{XL}

KING STARLITE[®] XL LIGHTWEIGHT MARINE UTILITY SHEET

King StarBoard[®] XL is a lighter, more economical version of the popular King StarBoard[®]. King StarLite[®] XL is an economical cellular (closed cell) utility sheet made from select high-grade King StarBoard[®] recycled polymer material. It is ideal for boat parts, as an upholstery substrate and in other behind-the-scenes applications where edges aren't visible. King StarLite[®] XL is up to 30% lighter in weight than King StarBoard[®] and it offers the same quality textured surface on both sides.



StarLite XL in Utility Black, Utility Gray and Utility White.

Colors: Utility Black, Utility Gray and Utility White.

Standard Sheet Sizes: 60" x 96", 48" x 96"

Standard Gauges: 1/4", 3/8", 1/2", 3/4"

KING STARBOARD^{AS}

KING STARBOARD[®] ANTI-SKID MARINE BUILDING SHEET

King StarBoard[®] AS is a sure-grip marine-grade decking material designed specifically for high-traffic areas. This unique product features a special high-friction surface polymer and dot pattern to prevent slipping and promote drainage. King StarBoard[®] AS needs no maintenance other than normal cleaning, is excellent for gangways, steps, and virtually any walk-on surface, and is available in the same colors as King StarBoard[®] for a perfect match. King StarBoard[®] AS is available in a dot or diamond surface pattern with standard matte finish on the reverse side.



Colors: White/White, Light Gray, Dolphin Gray, Sansshade, Arctic White, Seafoam, Sea Pearl and Black.

Standard Sheet Sizes: 54" x 96", 48" x 96"

Standard Gauges: 1/2", 3/4", 1"

STANDARD COLORS FOR KING STARBOARD[®], KING STARBOARD[®] XL AND KING STARBOARD[®] AS

WHITE/WHITE	SEAFOAM	ARCTIC WHITE*	SEA PEARL*
SANSHADE	LIGHT GRAY	DOLPHIN GRAY	BLACK

*Call for availability. Minimums may apply.
For best color representation, call TPI to request a sample.

KING STARBOARD® ST High-Strength, Scratch-Resistant Polymer Building Sheet

King StarBoard® ST is a special, high-density polyethylene sheet that provides a more scratch-resistant surface for many outdoor applications. A unique and advanced polymer makes the material almost 25% stronger than King StarBoard®. High scratch-resistance makes it especially appropriate in the construction of cabinets and furniture. Also, its high strength and stiffness make it desirable for applications where less structural support is available. King StarBoard® ST is environmentally stabilized and can be used in wet areas that need to be cleaned often or are regularly exposed to moisture. It can be fabricated using common woodworking tools and techniques. King StarBoard® ST XL, a lighter, more economical version of King StarBoard® ST, is also available. Call TPI for more information.

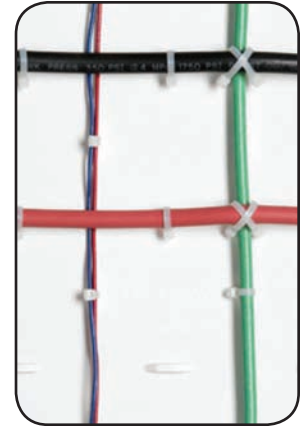
Colors: White/White, Light Gray, Dolphin Gray, Sansshade, Seafoam, Sea Pearl and Black.

Standard Sheet Size: 48" x 96", 54" x 96"

Standard Gauges: 1/4", 3/8", 1/2", 3/4", 1", 1-1/2"

KING E-BOARD® Patent-Pending Wire and Hose Mounting Board

King E-Board® is a patent-pending polymer sheet that replaces and simplifies traditional methods for fastening wire and hose runs in boats, recreational vehicles and many industrial applications. Save time, money and materials using ordinary zip ties and King E-Board® instead of wire and hose clamps, which require screws, hardware, tools and a free hand that may not be available. King E-Board® not only organizes and improves the appearance of a wire installation, but also increases safety by securing these items to a non-conductive surface. King E-Board® is a complete panel solution for a consistently clean look and a fast, professional installation. It requires no backing material to accept screws and can be attached easily to most surfaces using either mechanical fasteners or bonding with the optional adhesive-friendly backing.



Colors: White.

Standard Sheet Size: 48" x 96" x 1/8"

Total Plastics Inc. is a full line pressure sensitive tape converter carrying preferred products from leading manufacturers such as Saint-Gobain Performance Plastics®, Permacele® and 3M™. Ask about our marine grade tapes or request our Marine Tape Sample Brochure. Call 1-800-456-0400 for more information .

Foam for Sealing & Gasketing

- **Norseal® V310**
- **Norseal® V730/V770/V820**
- **Norseal® V710/V740/ V740FR**
- **Norseal® V760/V860**

Closed Cell Sealing & Gasketing Tapes Standard & Custom Extrusions Specialty Products

High Performance Bonding & Attachment Tapes

- **ARM 10B/ARM 101**
- **Normount® V1300/V2800/V4600**
- **Normount® Acrylic A3100/A3200/A3300**
- **3M™ VHB® High Performance Bonding Systems**

