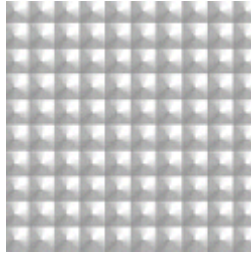


## ALP-32 CFL Computer Friendly Lens



ALP-32 CFL acrylic lenses have a raised prismatic pattern of male cones running parallel and perpendicular to the length and width of the lens. The overall pattern provides good lamp cut-off to minimize lamp images and provide very low brightness at angles close to the horizontal.

Lenses are strain-free and uniform in production. There are no fade-outs or streaks to detract from job performance and attractive appearance. Each lens is destaticized for minimum maintenance

*Total Plastics, Inc. will not be responsible for the use of this information relative to actual application. Users must make their own determination of its suitability for their specific application. No warranty is made for the fitness of any product, and nothing herein waives any of the seller's conditions of sale.*